

# Cast Strainers SW & Threaded

**Model #60WYS, #60TYS**

**Class 600 (1/2" to 2")**

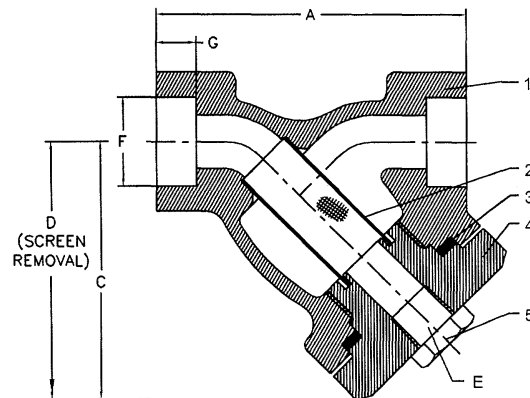
**STANDARD:**

**Pressure/Temperature Rating: ANSI B16.34**

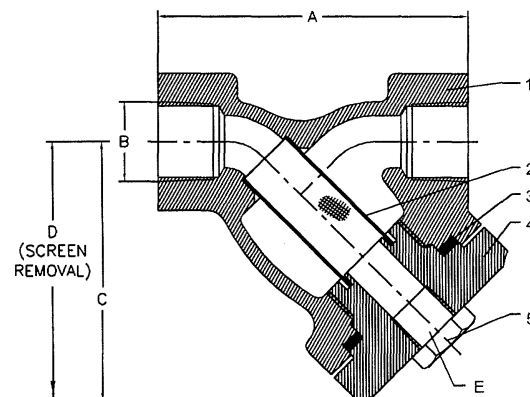
**Wall thickness: ANSI B16.34**

**Connections - ANSI B16.11 for Socket Weld  
ANSI B1.20.1 for Threaded**

NO.	PART NAME	A 216-WCB	A 351-CF8M	A 351-CN7M
1	BODY	A 216-WCB	A 351-CF8M	A 351-CN7M
2	SCREEN	A 276-304	A 276-316	A 351-CN7M
3	GASKET	SS 304+GRAPHITE	PTFE	PTFE
4	COVER	A 216-WCB	CF8M	A 351-CN7M
5	NPT PLUG	SS 304	SS 316	A 351-CN7M



SOCKET WELD END



THREADED END

SIZE	INCH	1/2	3/4	1	1 1/4	1 1/2	2	
	MM	15	20	25	32	40	50	
A	INCH	2.99	3.74	4.61	5	5.63	7.01	
	MM	76	95	117	127	143	178	
B	1/2-14 NPT		3/4-14 NPT		1-11.5 NPT		1 1/4-11.5 NPT	
	1 1/2-11.5 NPT		2-11.5 NPT					
C	INCH	2.52	2.83	3.7	4.88	4.88	6.06	
	MM	64	72	94	124	124	154	
D	INCH	2.8	3.23	4.49	6.14	6.14	7.95	
	MM	71	82	114	156	156	202	
E	1/4-18 NPT		3/8-18 NPT		3/4-14 NPT		1-11.5 NPT	
F	INCH	0.86	1.07	1.33	1.68	1.92	2.41	
	MM	21.8	27.2	33.8	42.7	48.8	61.2	
G	INCH	0.39	0.50	0.50	0.5	0.5	0.62	
	MM	9.8	12.8	12.8	12.8	12.8	15.8	
Weight	LBS	2	3	5	7	10	15	
	KGS	1	1.5	2.25	3	4.5	7	

